

# SOLID SURFACE ADHESIVE INSTRUCTIONS by FLEXPOST®

## Tools Required:

- ◆ Gloves
- ◆ Standard Caulk gun
- ◆ Wire brush
- ◆ Level
- ◆ Marker

## Parts Included:

- ◆ 1- Base
- ◆ MasterWeld 948 (adhesive) (read tube instructions prior to use)

**NOTE: Product is not intended for use on asphalt.**

1



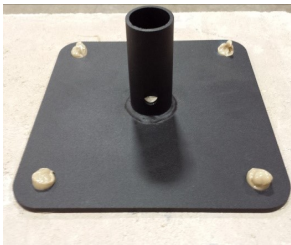
- ◆ The application area must be free of dirt, grease and oil. Using a wire brush clean area prior to degreasing, allowing area to dry for a min of 2 hours if temp is at or above 70 deg.

2



- ◆ Apply about 1-1/2in dab of MasterWeld 948 adhesive at each marked location of the surface. Place another dab of adhesive between the dabs of adhesive.

3



- ◆ Place base on adhesive with the holes in the base over the adhesive. Press the base into the adhesive. Adhesive will come out of the holes. Once hardened this will form a mechanical bond.
- ◆ Allow a minimum of 2 hours for the adhesive to setup before proceeding with assembly. Adhesive will be fully cured in 24 hours.

# FLEXPOST®



2236 112th Ave. Ste 80  
Holland, MI 49424 USA

Phone: (616) 928-0829 Toll Free: (888) 307-6610 Fax: (616) 928-1138

[www.flexpostinc.com](http://www.flexpostinc.com)